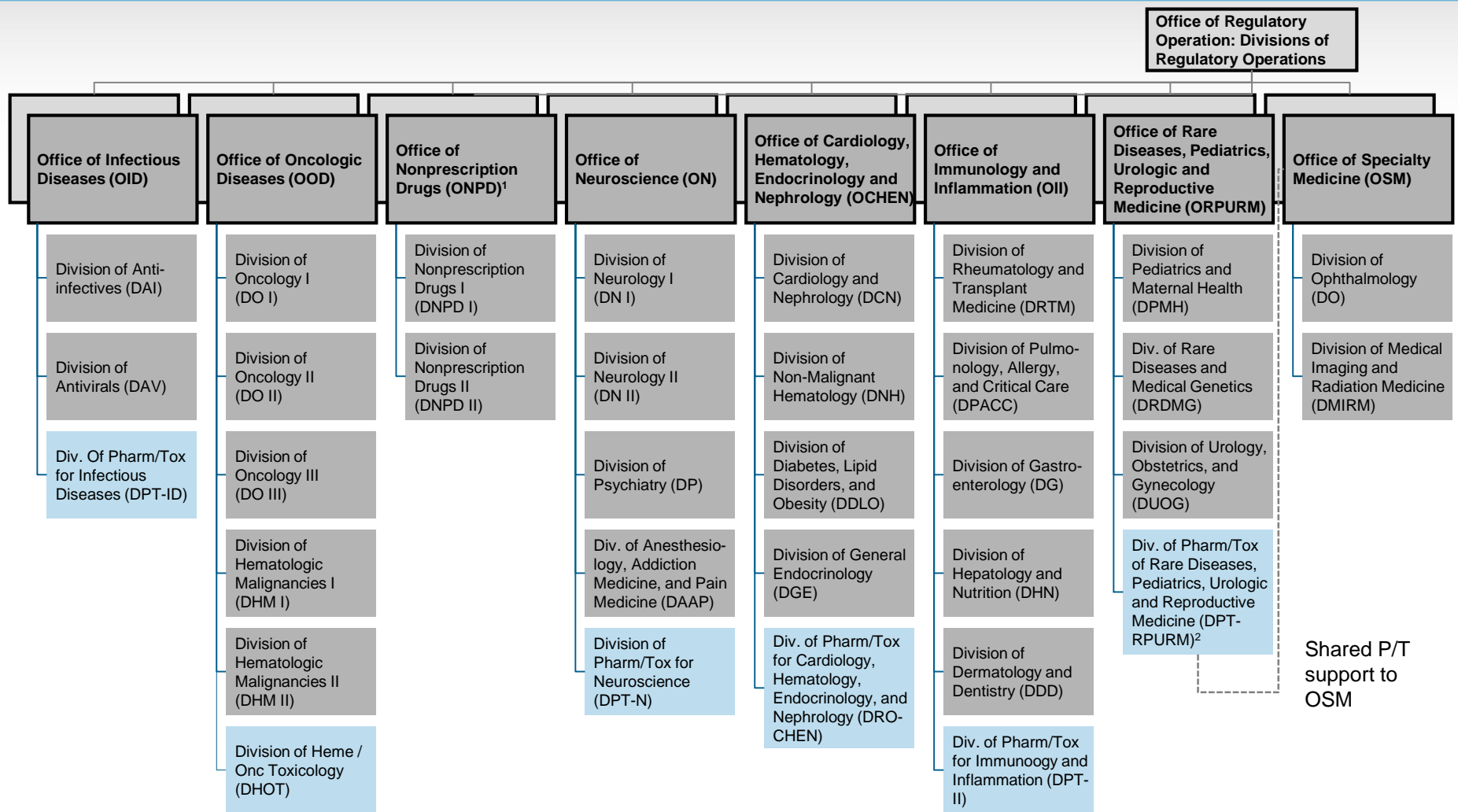




Reorganized Clinical and Pharm/Tox Structure



1 ONPD P/T staff in the ONPD IO given the small current size of P/T staff.

2 Single P/T division with staff supporting both ORPURM and OSM; PT DD will have dotted line reporting to ORPURM and OSM for P/T issues, and solid line to ORPURM Office Director for PMAP, etc.